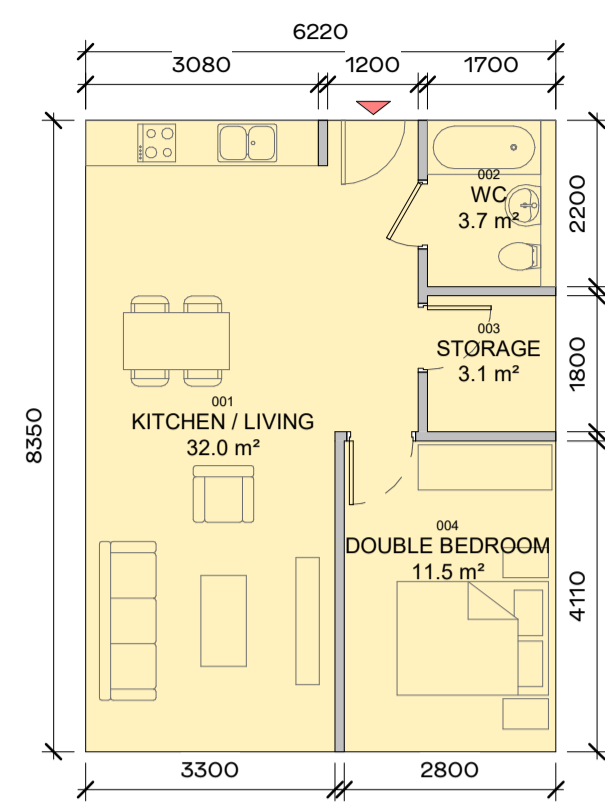


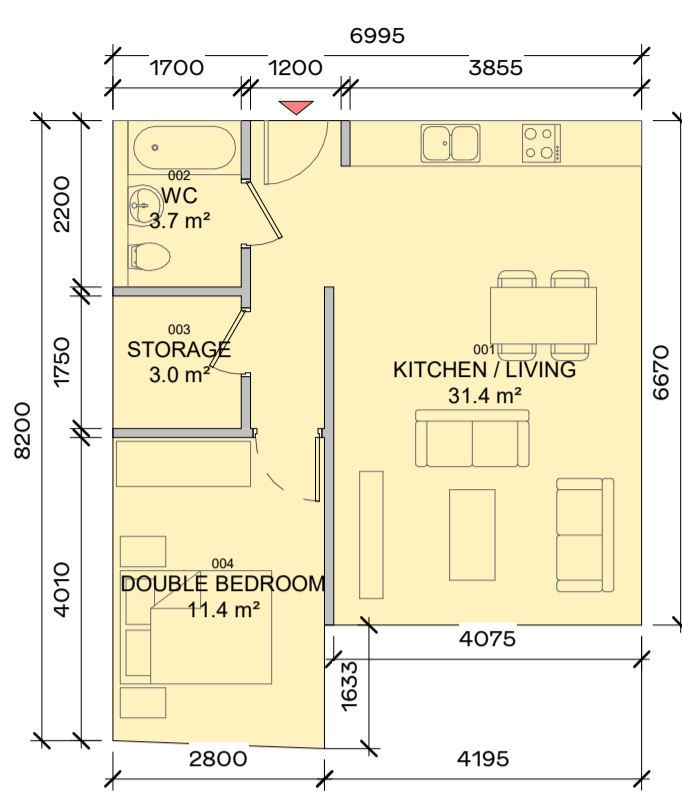
APARTMENT TYPE - 1B-1A		
NO.	NAME	AREA
001	KITCHEN / LIVING	25.3 m ²
002	WC	3.7 m ²
003	DOUBLE BEDROOM	11.5 m ²
004	STORAGE	3.1 m ²
APARTMENT TOTAL AREA		45.2 m²

1 APARTMENT TYPE - 1B-1A
1:100



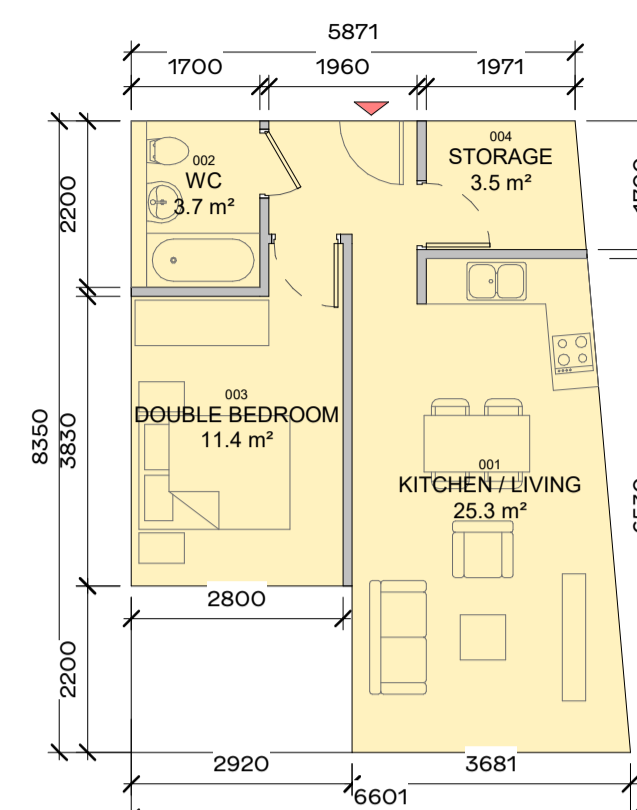
APARTMENT TYPE - 1B-1B		
NO.	NAME	AREA
001	KITCHEN / LIVING	32.0 m ²
002	WC	3.7 m ²
003	STORAGE	3.1 m ²
004	DOUBLE BEDROOM	11.5 m ²
APARTMENT TOTAL AREA		51.9 m²

2 APARTMENT TYPE - 1B-1B
1:100



APARTMENT TYPE - 1B-1C		
NO.	NAME	AREA
001	KITCHEN / LIVING	31.4 m ²
002	WC	3.7 m ²
003	STORAGE	3.0 m ²
004	DOUBLE BEDROOM	11.4 m ²
APARTMENT TOTAL AREA		51.1 m²

3 APARTMENT TYPE - 1B-1C
1:100



APARTMENT TYPE - 1B-1D		
NO.	NAME	AREA
001	KITCHEN / LIVING	25.3 m ²
002	WC	3.7 m ²
003	DOUBLE BEDROOM	11.4 m ²
004	STORAGE	3.5 m ²
APARTMENT TOTAL AREA		45.6 m²

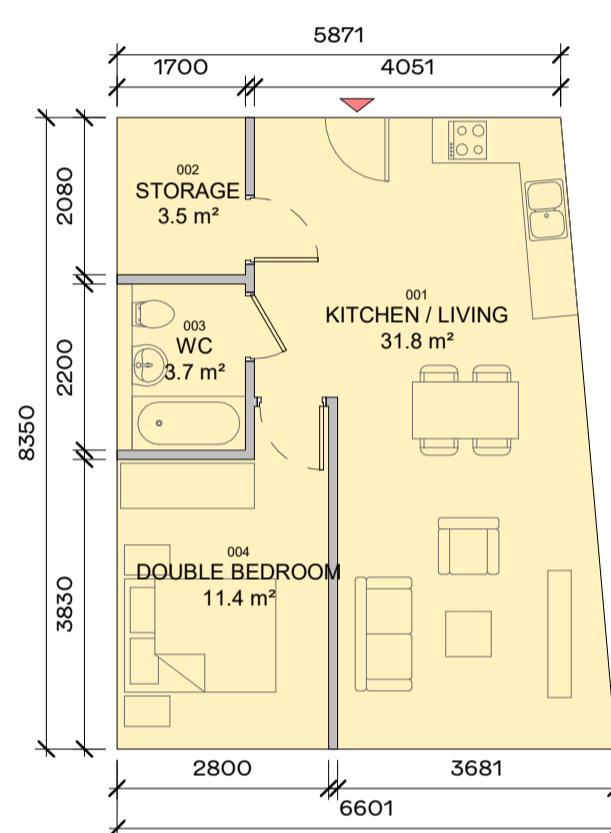
4 APARTMENT TYPE - 1B-1D
1:100

SITE DRAWINGS LEGEND:

REFER TO BARRET MAHONY CIVIL ENGINEERING DRAWINGS FOR ALL DRAINAGE/ ROAD INFORMATION.

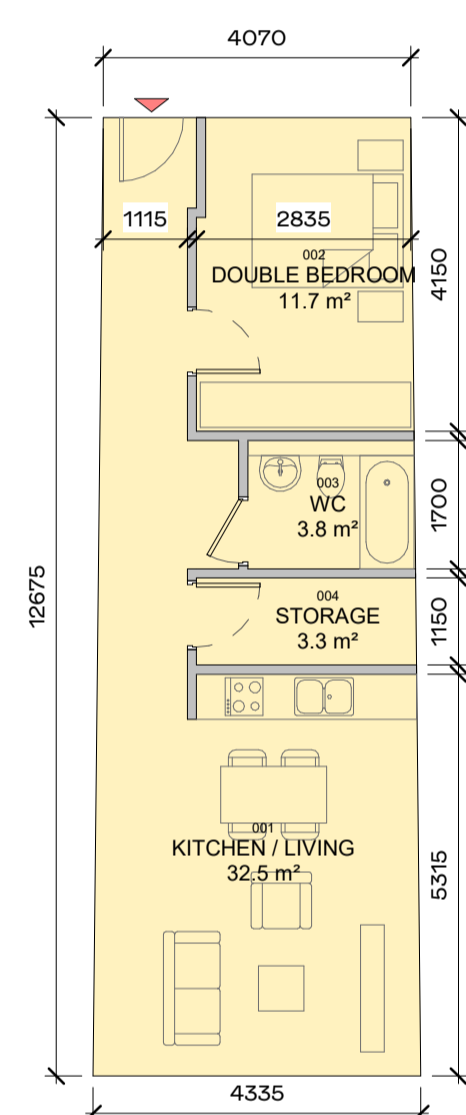
SURVEY INFORMATION PROVIDED BY JONES ENGINEERING ON 23.4.2019.

PLEASE REFER TO THE PAUL HOGARTH COMPANY LANDSCAPE DRAWINGS FOR ALL INFORMATION ON EXISTING AND PROPOSED TREES, MATERIAL FINISHES AND LAYOUT. ANY REFERENCE TO TREES/ HARD OR SOFT LANDSCAPING IN THIS DRAWING ARE INDICATIVE ONLY.



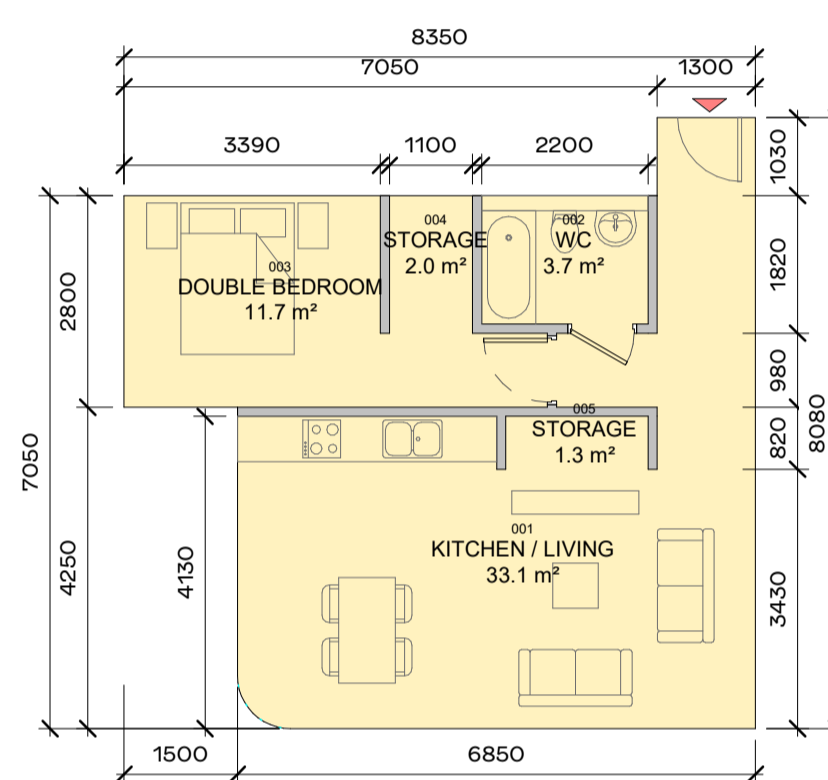
APARTMENT TYPE - 1B-1F		
NO.	NAME	AREA
001	KITCHEN / LIVING	31.8 m ²
002	STORAGE	3.5 m ²
003	WC	3.7 m ²
004	DOUBLE BEDROOM	11.4 m ²
APARTMENT TOTAL AREA		52.1 m²

5 APARTMENT TYPE - 1B-1F
1:100



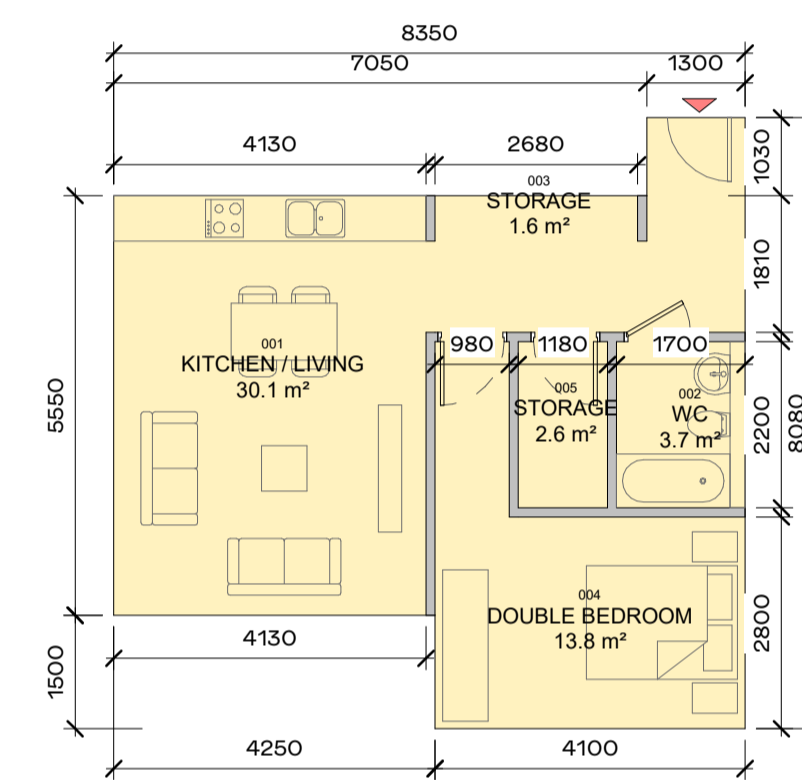
APARTMENT TYPE - 1B-2C		
NO.	NAME	AREA
001	KITCHEN / LIVING	32.5 m ²
002	DOUBLE BEDROOM	11.7 m ²
003	WC	3.8 m ²
004	STORAGE	3.3 m ²
APARTMENT TOTAL AREA		53.3 m²

6 APARTMENT TYPE - 1B-2C
1:100



APARTMENT TYPE - 1B-4A		
NO.	NAME	AREA
001	KITCHEN / LIVING	33.1 m ²
002	WC	3.7 m ²
003	DOUBLE BEDROOM	11.7 m ²
004	STORAGE	2.0 m ²
005	STORAGE	1.3 m ²
APARTMENT TOTAL AREA		53.7 m²

7 APARTMENT TYPE - 1B-4A
1:100



APARTMENT TYPE - 1B-4B		
NO.	NAME	AREA
001	KITCHEN / LIVING	30.1 m ²
002	WC	3.7 m ²
003	STORAGE	1.9 m ²
004	DOUBLE BEDROOM	13.8 m ²
005	STORAGE	2.6 m ²
APARTMENT TOTAL AREA		53.8 m²

8 APARTMENT TYPE - 1B-4B
1:100

ALL APARTMENT TYPES SHOULD BE READ IN CONJUNCTION WITH DRAWING NO.S P1601, P1602, P1603, P1604 AND HOUSING QUALITY

P2	26/11/2019	ISSUED FOR PLANNING APPROVAL	DB	OJ
P1	05/08/2019	ISSUED FOR PAC REQUEST	DB	OJ
REV	DATE	DESCRIPTION	CHK	DRN

STATUS CODE DESCRIPTION

ISSUED FOR PLANNING APPROVAL

CLIENT

Atlas GP Limited

PROJECT

Project Claremont

DRAWING

APARTMENT TYPES
SHEET 1 OF 4

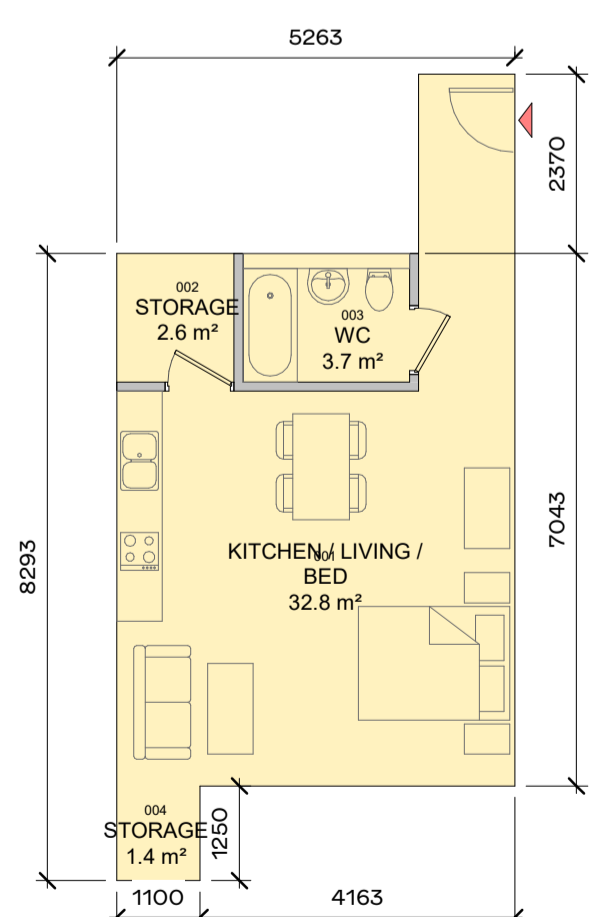
PROJECT NUMBER	DATE
950520	26/11/19

SCALE@ A1:	DRAWN/CHECKED:
1: 100	OJ/ DB

REVISION	DRAWING NUMBER	STATUS CODE:
P2	CLR-HJL-XX-XX-DR-A-1601	A1

Henry J Lyons

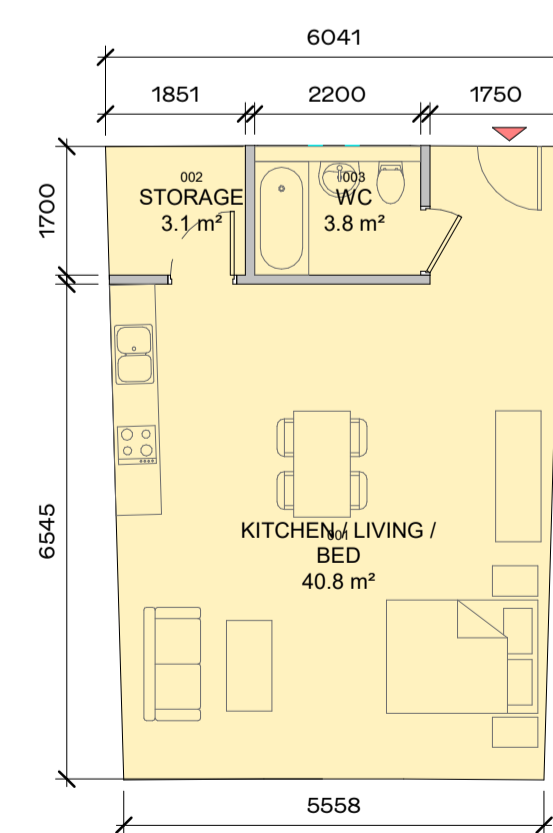
Architecture + Interiors
 henryjlyons.com
 +353 1 858 3333
 info@henryjlyons.com
 53-54 Pearse Street
 Dublin D02 K466



APARTMENT TYPE - 1B-S1		
NO.	NAME	AREA
001	KITCHEN / LIVING / BED	32.8 m ²
002	STORAGE	2.6 m ²
003	WC	3.7 m ²
004	STORAGE	1.4 m ²
APARTMENT TOTAL AREA		41.5 m²

NB - Studio

9 APARTMENT TYPE - 1B-S1
1:100



APARTMENT TYPE - 1B-S2		
NO.	NAME	AREA
001	KITCHEN / LIVING / BED	40.8 m ²
002	STORAGE	3.1 m ²
003	WC	3.8 m ²
APARTMENT TOTAL AREA		48.6 m²

NB - Studio

10 APARTMENT TYPE - 1B-S2
1:100